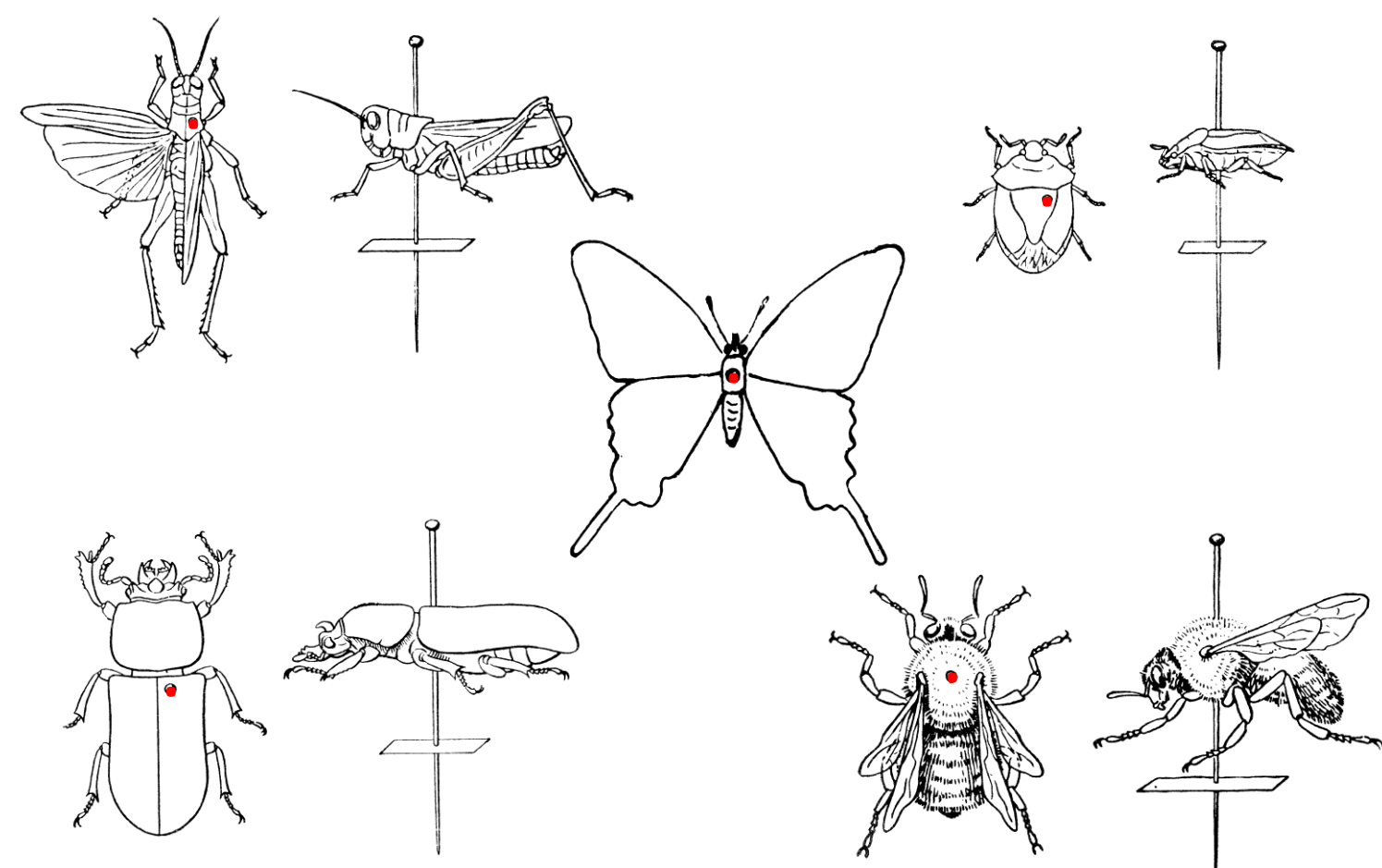
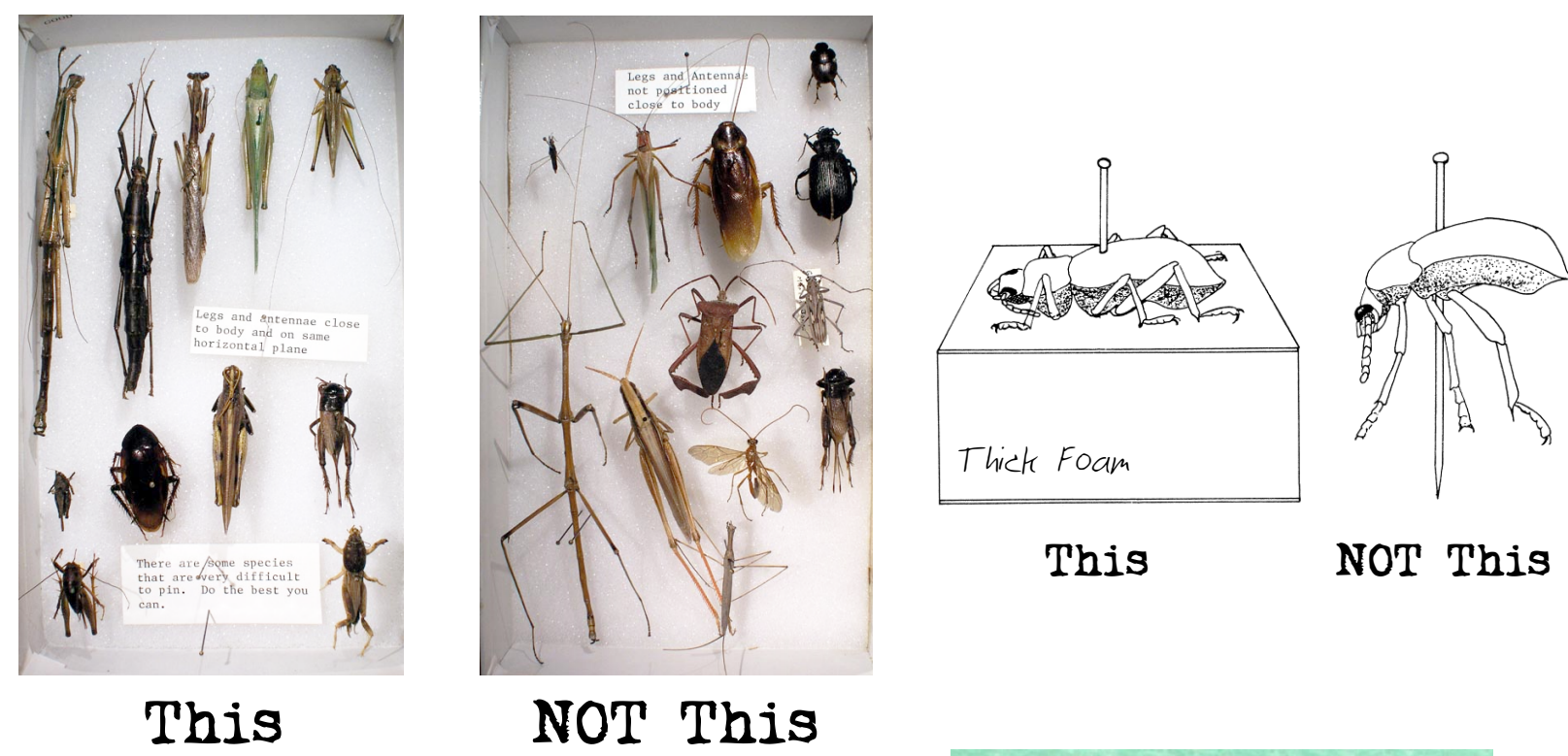


# Properly Pinned Specimen

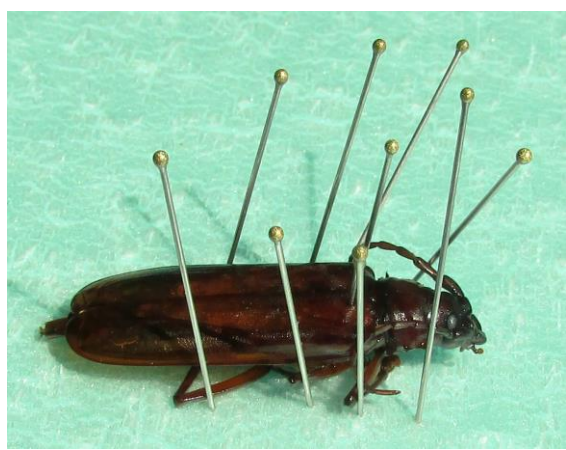
## 1. Pin in the Correct Place and Set to Correct Height



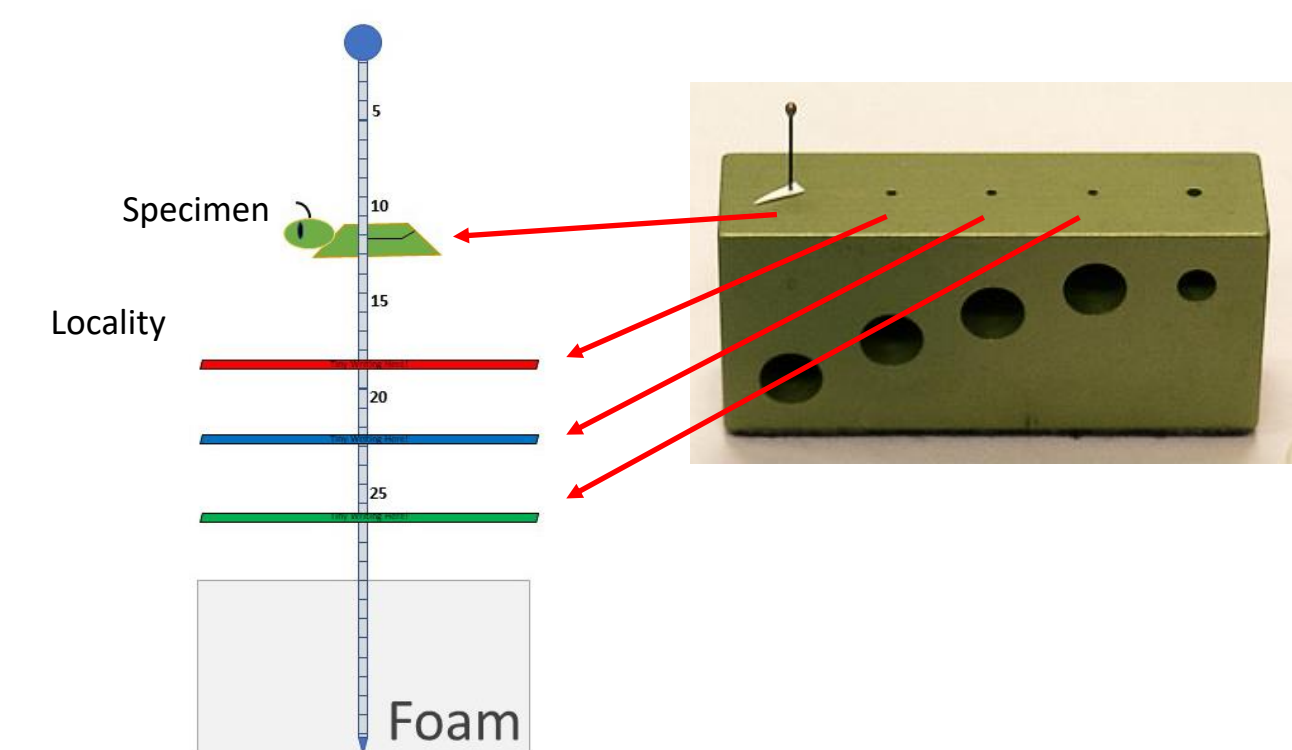
## 2. Appendages Held Tight



Arrange legs, etc. of fresh specimens. When the specimen dries it will stay that way. Use brace-pins if necessary.

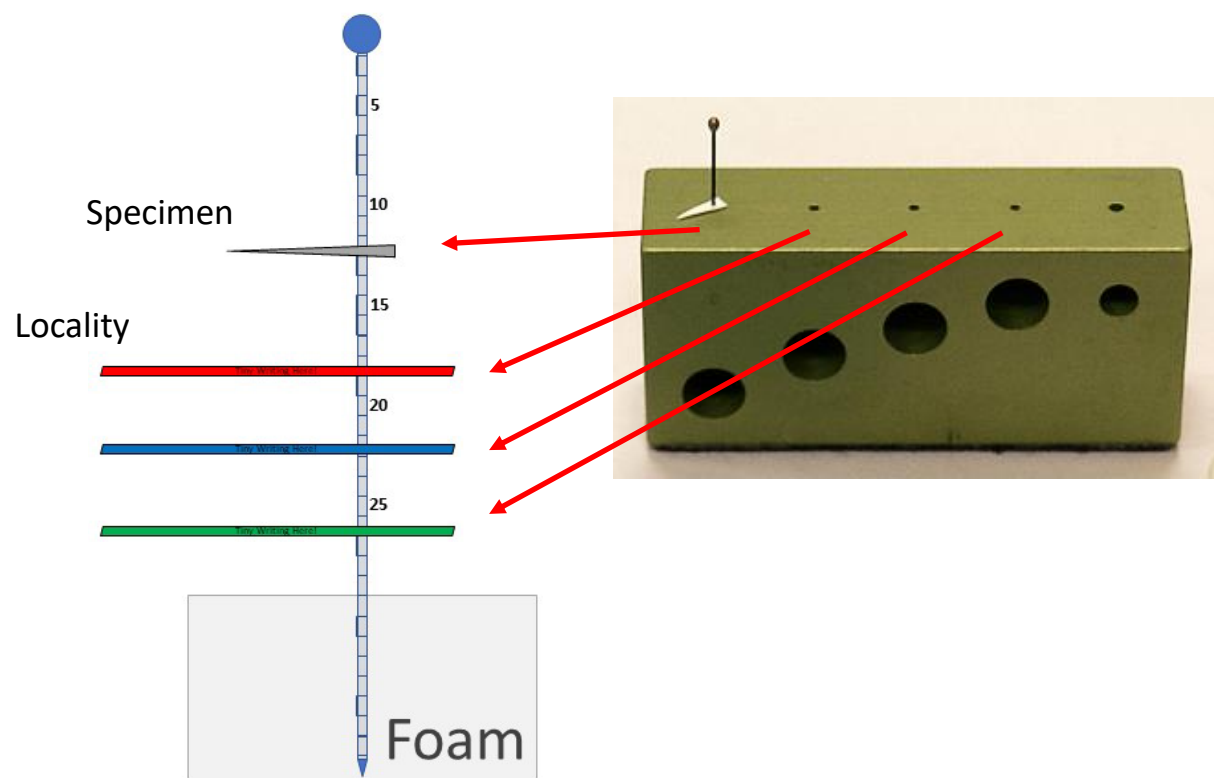


## 3. Specimen/Labels at Correct Height



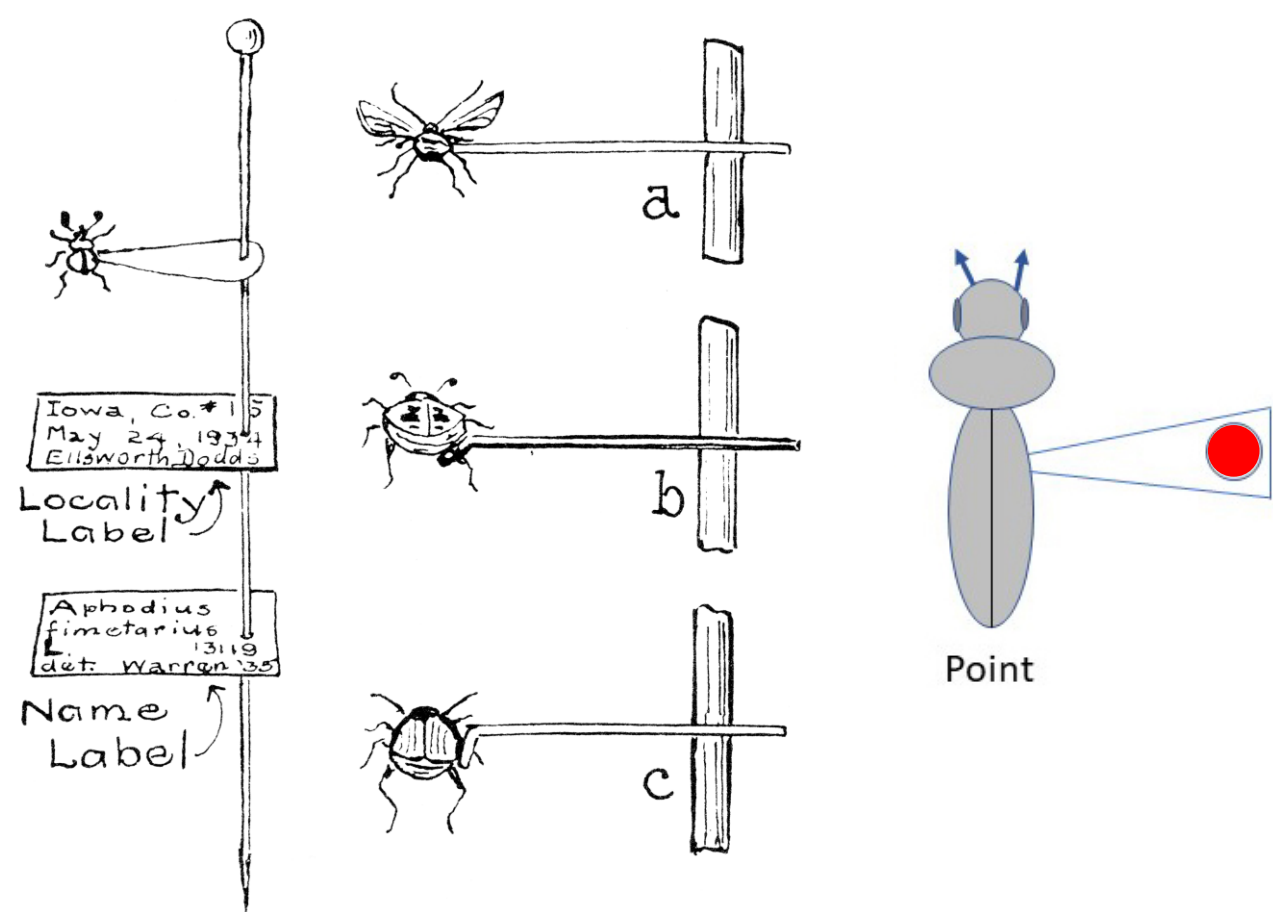
# Properly Pointed Specimen

## 1. Put Point at Correct Height



Start with the paper point on the pin. Add labels after the specimen is attached.

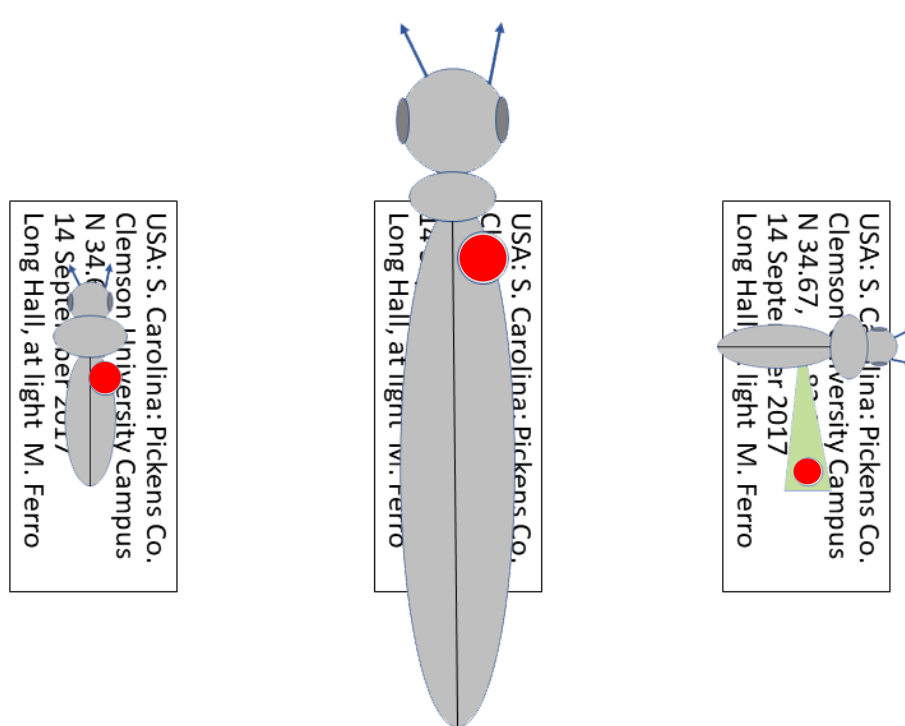
## 2. Glue Specimen in the Correct Orientation



Touch the tip of the point in some glue. Touch the point to the RIGHT SIDE of the specimen.

## 3. Labels at Correct Height (See 1 above)

# Proper Label Orientation



**Pinned specimens:** label should be readable from LEFT and CENTERED on specimen.

**Pointed specimens:** label should be oriented in the same direction as the point and should be centered on the point + specimen.